



MILLMERRAN

Brilliant Skies
Broad Horizons

WHERE TO STAY

Millmerran Motel	07 4695 1155
Passchendale B&B.....	0403 776 410
Rams Head Hotel.....	07 4695 1488
The Mill Inn Tavern	07 4695 1199

CARAVAN PARKS

Millmerran Village Caravan Park.....	07 4695 2020
Millmerran Caravan Park	07 4695 1572

CAMPING GROUNDS

Millmerran Showgrounds	0427 951 241
Group bookings	0429 954 151

Walpole Park - Cnr Walpole & Charles Sts

DUMP POINT: Opposite Walpole Park

WHERE TO EAT

CAFÉ'S - COFFEE, TAKEAWAY & EAT IN

Millmerran Bakery & Café.....	07 4695 1589
Route 85	07 4695 1179
Forage Kitchen and Coffee Bar.....	0421 712 163
BP Service Station	07 4695 1584
Pampas Service Station	07 4693 9000
Captains Mountain Service Station ..	07 4695 4187

LICENCED RESTAURANT / PUB / CLUB

Rams Head Hotel	07 4695 1488
Mill Inn Tavern	07 4695 1199
Millmerran Bowls Club	07 4695 1169
Millmerran Golf Club.....	07 4695 1476

FRESH / DELICATESSEN / PANTRY

Foodworks Supermarket.....	07 4695 1444
IGA Supermarket	07 4695 1260
Danglelow Spices	0419 776 942

VISITOR INFORMATION

Millmerran Visitor Information Centre & Historical Museum.....	07 4695 2560
Millmerran Library	07 4695 5619
Centrelink Agency.....	07 4695 5650
Yallambee Aged Care	07 4695 1580
Yallambee Boutique (Op Shop)	07 4695 1177
Lifeline	1300 991 443
Post Office	07 4695 1147
Childcare - Little Tackers.....	07 4695 2999

RACQ & TOWING (LARGE & SMALL VEHICLES)

Elborne's.....	0428 952 600
----------------	--------------

LPG BOTTLES

Mitre 10	07 4695 1636
RAFF	07 4695 2939
Kirstenfeldt Mechanical Repairs.....	07 4695 1255

MEDICAL

Millmerran Medical Centre.....	07 4695 1100
Millmerran Pharmacy	07 4695 1458

BANKS

Heritage Bank	07 4695 2200
NAB	07 4695 3000

FUEL, OIL AND TYRES

BP Millmerran.....	07 4695 1584
Elborne's Tyres	07 4695 2600
BP Captains Mountains.....	07 4695 4187

AUTO ELECTRICAL

Garratt Auto Electrical.....	0407 645 552
KJM Auto Electrical.....	0466 688 608

ELECTRICAL, SOLAR, AIRCON

Knights Electrical Services.....	07 4695 1304
----------------------------------	--------------

MECHANICAL REPAIRS / SERVICE

Charles Service Centre.....	07 4695 1700
Kirstenfeldt Mechanical Repairs.....	07 4695 1255
High Quality Service Solutions.....	0403 603 433

HARDWARE / FISHING SUPPLIES

Millmerran Mitre 10.....	07 4695 1636
Raff Group	
Home Timber & Hardware	07 4695 2939

CLOTHES, SHOES, HATS, BELTS

Millmerran Rural	07 4695 1355
Loolabelles	07 4695 1555

BEAUTY SERVICES

Hair Expressions.....	07 4695 1459
Trishee Vee's Hair Boutique	07 4695 1575
Trisha-Anne's Nails & Beauty.....	0427 241 175

PROPERTY SALES

Millmerran Rural.....	07 4695 1355
Jan.....	0428 951 056
Jason	0428 951 355

UNIQUE GIFTS

Yondale Designs	0407 623 746
Loolabelles	07 4695 1555
Millmerran Newsagency	07 4695 1339

HOSPITAL.....07 4695 3111
AMBULANCE Centre Admin07 4695 1266
POLICE STATION07 4695 1220

EMERGENCY
POLICE • AMBULANCE • FIRE
Dial 000 (Triple Zero)



MILLMERRAN MUSEUM *A Walk Through Time*

Participating Museum in the Toowoomba region • Heritage Transport Trail



Established in 1977 with the aim of preserving the history of Millmerran and district for future generations, the Millmerran and District Historical Society Inc. proudly maintains the extensive Millmerran Museum.

Put aside a few hours, pack a picnic and enjoy a nostalgic journey as you discover the treasures housed in the Millmerran Museum's extensive collection.

The stories of Millmerran's past are kept in 14 historical buildings: pioneering histories and photographs, military, railway, 1877 "Water Baby", schooling, agricultural, indigenous artefacts, a fitted-out shepherd's hut and so much more. There is in fact something for everyone.

Catering is available for large groups or enjoy a BYO lunch in the beautiful grounds at 24 Charlotte Street.

Please visit the website for more details

www.millmerranmuseum.com.au

Contacts: 0427 588 587 Fay Twidale (*President*)

0438 174 714 Pat Walsh (*Secretary/Treasurer*)

07 4695 2273 Margaret Anderton

ENTRY IS BY APPOINTMENT

Adults\$5

Concessions.....\$3

Children (5-13 yrs)\$2

Bus Groups\$2 pp

Halls in the Country District of Millmerran



Former Kooroongarra Hall



Rocky Crk Mt Emlyn Soldiers Memorial Hall



Millwood Hall

NOT FOR PUBLIC ENTRY



MILLMERRAN HERITAGE WALK



The name of Millmerran is said to be of aboriginal origin from “Meel” the eye, and “Merran” to look out. The name was suggested to Edward Walpole by Mr A Metson, who was a recognised authority on aboriginal speech. Mr Metson advised that the first syllable of the name could be pronounced Mill although “Meel” is the correct sound as given by the local aboriginal people. Prior to Millmerran being used, the area was known for a short time as Back Creek and also Domville. (Sourced from *Millmerran 75th Anniversary [1955] booklet* compiled by Mr Sid Gillespie)

Please follow the Heritage Walk Map on Pages 6 and 7 in number order commencing at Walpole and Campbell Streets, Anzac Park

- The Church of England Church** is built on land donated by Edward Walpole. The original church was built in 1891 and is now used as the hall with the new church built in 1955 (if you walk into Anzac Park you can see the old building). St Peters was the first church built in the Millmerran town district.
- The bowling green is now on the site of the original “**Domville Hotel**”. The name was changed in 1911 to the “Imperial Hotel”, this establishment burned down in 1924. The Imperial was then built on the site of the present hotel in Campbell Street.
- The Cultural Centre** was opened in 1981 and is on the site of the old Melba Theatre. Pictures were screened here three times a week. The original theatre burned down on 17th April, 1955 and a new theatre was built within five months. With the advent of TV, the Melba closed its doors on 26th February, 1977.
- Post Office** was built in 1923 at 34 Walpole Street [[Heritage Plaque location](#)]. It housed the telephone exchange where up to three telephonists worked and where one slept to operate the exchange between 9pm and 6am. In recent years the post office has been relocated to Campbell Street.
- Catholic Church Grounds** - the original church (built 1903) is now used as the hall with the new church opened in 1952. The land for the Catholic Church was donated by Edward Walpole.
- St Joseph’s Convent** was used by the Nuns until the late 1980s but is now used as the parish centre. Formal Catholic education began in the church hall in 1959 while the school was being built.
- The First Police Residence**. Constable George Moore was stationed in Millmerran in 1895. Constable Moore later bought the licence of the local hotel.
- The Original Residence and General Store** - Edward (Daddy) Walpole 1884, 14-16 Charlotte Street [[Heritage Plaque location](#)]. Edward Walpole opened his store in the mid 1880s. This was a general store, butcher’s shop and post office. In 1891 Edward Walpole surveyed some town allotments. This was the nucleus of the town and it was from this period that the town commenced to grow.
- Millmerran Museum** was the original Millmerran Shire Council Chambers. Millmerran Shire was formed from the Jondaryan Divisional Board and was declared a local authority on 24th April, 1913. The building was used by the council until 1961. The building and grounds were then handed to the newly formed Millmerran Historical Society in the 1970s. The Millmerran Museum opened to the public on 27th September, 1981.
- Historic Heroes Walk** - Walking through the grounds of the library and Domville Place to Campbell Street, you will pass by four columns paying homage to the early settlers.

BUSH CHARACTERS

- Edward Arthur Pimm (Teddy) took over the family carrying business in 1943 - Millmerran to Brisbane Transport
- Edmund John Butler (Joe) started work at a very young age at Western Creek Station

INDUSTRY

- Douglas Alexander Hall (Doug) began his poultry business in 1960

WOMEN OF CHARACTER

- Bridget O’Leary (Ettie) - the first person to open a Hospital in Millmerran in 1934
- Sarah Boyd - the first teacher at Yandilla Provisional School, Back Creek in 1882

FOUNDING FAMILIES

- Gore Family of Yandilla - founders of a Pastoral empire
- Edward Walpole - founder of the town of Millmerran



Cross Campbell Street at the clock and walk up to the Ram's Head Hotel

11. **Imperial Hotel** 1925 - Licensee Fred Scharer, 1 Campbell Street [\[Heritage Plaque location\]](#). Currently named The Ram's Head Hotel. As the solitary hotel it was very profitable, however liquor licences given to Sporting Clubs has spread the drinking trade. The "Imperial" has had many owners and many name changes and many renovations throughout the years (sourced from *Millmerran On My Mind* by HD Curtis 2013). "Millmerran On My Mind" is a compilation of memories by Harry Davidson Curtis 2013 and is available for sale at the Visitor Information Centre/Museum.
12. **Ridgeway's Fruit Shop, Barber's Shop and Billiard Room** - 21 Campbell Street. [\[Heritage Plaque location\]](#) located beside Millmerran Newsagency.
13. **Mr Jack West's Café** 1918 - 31 Campbell Street [\[Heritage Plaque location\]](#). Currently occupied by Antonio Accounting and Millmerran Landcare.
14. **Elbornes Butchers** 1916 - 37 Campbell Street [\[Heritage Plaque location\]](#). Currently occupied by Millmerran Meats.
15. **Charlie Bremner Saddlery** 1930s - 39-41 Campbell Street [\[Heritage Plaque location\]](#). Currently occupied by Millmerran Post Office.
16. **Passchandale Residence and Boot and Saddle Manufacturing** - Mr W Flynn 1919, 55-57 Campbell Street [\[Heritage Plaque location\]](#). Billy Flynn's home "Passchandale", the name being a memory of the First World War in France. Bill Flynn had a small shop alongside where he conducted a shoe repair business. The home and shop have changed hands many times during the past years and the shop has had many uses and many short-term tenants. At present it is a coffee shop and the house a "Bed and Breakfast" (sourced from *Millmerran On My Mind* by HD Curtis 2013).
17. **Bakery and Residence** - 1930s - Owner John Lahood, 69 Campbell Street [\[Heritage Plaque location\]](#). Currently occupied by Danglelow Spices.

Cross Campbell Street to the building on the corner of Margaret and Campbell Streets

18. **Frank Hill** - Blacksmith early 1900s, 78 Campbell Street [\[Heritage Plaque location\]](#). Currently occupied by Kirstenfeldt Mechanical.

*Now you can complete your walk back up to Anzac Park, taking a selfie as you pass by our **CAMP OVEN** located on the corner of Mary Street and Campbell Street*



MURAL WALK AND BIKE RIDE

A Visitor Information Centre Millmerran – Millmerran & District Historical Society

This Historical Mural shows a steam traction engine and plough. Two engines and a plough were imported from England to Australia in 1885. They were originally used in the cultivation of Lucerne on the Yandilla Station.

B The Millmerran Water Supply

This reservoir was constructed in 1981. Murals painted on the walls of the reservoir depict the early days of transporting water in Millmerran.

C Transport Depot

These Murals show the development of transport from horse drawn drays carrying wool bales and wheat bags in the 19th Century to the early part of the 20th Century.

D The Old Millmerran Butter Factory

The Murals painted on this building show the development of the dairying industry in the Millmerran District.

E Millmerran State School

The School was first established in 1882. The Mural shows the vast changes in Education, from hands on learning to the technical computer age of today.

F Millmerran Swimming Pool

The Pool Murals show swim costume fashions through the years. The mural also shows a typical waterhole, where the people of Millmerran went to swim until 1966 when the Olympic size swimming pool was built.





Sports Centre



Water Tank



Museum



Transport Depot Mural

- - - - -

—————

.....

Heritage Walk

Mural Walk

Mural Bike Ride

THINGS TO DO WHEN SHORT ON TIME

Unwind on the banks of Back Creek alongside the Gore Highway, pack a picnic and enjoy the birdlife. Throw in a fishing line if you have time or simply walk/ride the paths. Feeling more active? Enjoy the outdoor gym.

Take a selfie at our Tepee in William Simmons Memorial Park. The Tepee marks the Rendezvous Capital of Australia.

Just for the kids: Millmerran hosts a number of well-equipped playgrounds for the littlies with shaded play areas, picnic tables and toilets. Try Anzac Park in Campbell Street, Lions Park on Mary Street or for the older ones try the Factory Dam Park with skate park.

Take a walk: There are many great walking options. Two popular choices are the Mural Walk (pages 6 & 7) to view all the murals depicting the early years of Millmerran or our Heritage Walk featuring plaques detailing the history of the buildings and Historic Heroes telling the life stories of early settlers.

MORE TIME

TAKE A DRIVE Country drives are a great way to see our area. Try one of those listed on the lift-out map.

GET ACTIVE in our wonderful sports facilities. Try out the golf or bowling clubs or hit the gym at our Indoor Sports Centre. Take a swim next door in our olympic size swimming pool.

HISTORY BUFF The Millmerran Museum is the place for you to take a walk down memory lane with historic buildings, displays and memorabilia. Visit our historic cemeteries at Yandilla and Tumnaville.

LIKE TO SHOP Enjoy the friendly country hospitality in our shopping precinct. Browse the gift shops, pick up some groceries, grab your pharmaceutical or hardware supplies or stop for a beauty treatment.

EAT OR DRINK WITH THE LOCALS Enjoy our renowned bakery, heritage hotel, tavern, coffee shops and cafes. There is a great range of food and drink on offer - eat in or take away.

Mount Basalt Reserve

This unique geological and environmental area features rare volcanic formations and a few walking tracks and lookouts with spectacular views

HOW TO GET THERE

From Millmerran turn right into Millmerran Inglewood Road and turn left into Moffatt Reserve Road (9.5km) and continue on this road driving past the Power Station on your left.

At the 'T' intersection turn right onto Koorongarra Road (15km) and further down the road turn right onto Mt Basalt Road (20.4km). Travel through the closed gate, remembering to close it behind you.

Mount Basalt Walking Circuit includes a summit climb. While the short walk to the saddle is easy-going, be prepared for a bit of rock-hopping as the tracks to the summit cross basalt columns about 25cm in diameter

Best for: Bushwalking

Classification: Grade 4

Distance: 559m loop

Walking Time: 55 minutes approx.

CROP	SOWN	HARVEST
Wheat	May	Nov-Dec
Barley	Apr-Aug	Oct-Nov
Oats	Mar-Aug	Oct-Dec
Chick Peas	Apr-Jun	Oct-Nov
Fava Beans	Apr-Jun	Nov-Dec
Sorghum	Sept-Jan	March-May
Mung Beans	Sept-Feb	Dec-May
Millet	Sept-Feb	Dec-May
Forage Sorghum	Sep-Jan	Livestock Feed
Corn	Sep-Dec	Feb-June
Soybeans	Nov-Jan	April-May
Cotton	Oct-Nov	April-May



OUR AGRICULTURAL BACKBONE

On offer is a diversity of agricultural enterprise afforded to us by a variety of soil types depicted by the natural vegetation. The deep black soils of the Condamine flood plain produce some of the highest yielding and quality crops in Australia. Red sorghum and white cotton lint intermixed with maize, soybeans, sunflowers and mung beans crops make up the patchwork field through the summer months. Wheat, barley and chickpeas growing throughout the winter. Brigalow, belah and poplar box landscapes support dryland cropping of cereal, pulses, sorghum and forage crops. Much of these shallower soil types lend themselves to beef and lamb production on natural pasture and fodder crops. Throughout these areas wool production has been a significant feature with fine to medium wool sheep producing excellent yields.

Our proximity to population centres and animal feed stuffs mean the intensive livestock industry is the largest valued sector in the region. Pigs, poultry and beef grown here supply consistently high-quality produce that is sought after domestically and is exported to customers all over the world. Hay and silage are sourced locally and make up a large component of feedlot rations.

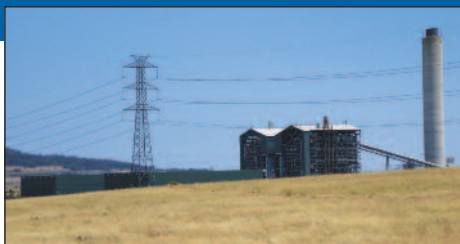
Significant areas of land are forestry reserves, managed by Qld Parks and Wildlife Service. The Forest Products division of the Qld Department of Agriculture and Fisheries carefully harvest Cypress Pine and Narrow-leaved Ironbark for use in the construction industry, which allows for sustainable regeneration of the timber resource. Much of the land is under lease to farmers for cattle grazing operations.

MILLMERRAN POWER STATION

Millmerran Power Station was commissioned in 2003 and is an integral part of the community. The 870MW plant owns the low-cost Commodore Coal Mine and utilises recycled water which is piped 98km from the Toowoomba Sewage Plant.

In 2006 the plant won the national Banksia Environment Award for water use. The supercritical units utilise the most efficient coal-fired technologies implemented in Australia. The air-cooled condensers mean that the plant consumes 90% less water than those with cooling towers.

The plant provides up to 15% of Queensland's power needs.



POINTS OF INTEREST: The Chimney is 141 metres high and the two boiler buildings are each 70 metres high and 50 metres long. The boiler furnaces convert about 25 backyard swimming pools of water to steam every hour. The power station covers an area of the size of 9 rugby fields (approx. 300m x 300m)

AUSTRALIAN CAMP OVEN FESTIVAL

MILLMERRAN QLD

OCTOBER 2020 & 2022

Camp Oven Cooking

Live Entertainment

Bush Poetry, Market Stalls

AND MORE!

P: 0429 727 503 E: info@acof.com.au W: acof.com.au



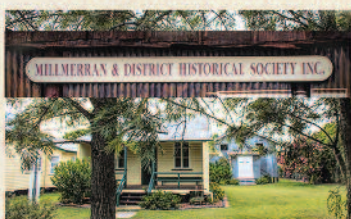
@australiancampovenfestival



24 Charlotte Street Millmerran

**Packed with thousands of historic objects and exhibitions
the Millmerran Museum has something for everyone.**

Fourteen historical buildings spread over an acre of leafy grounds; extensive displays including a 1950's School House, "Waterbaby" restoration, Farming, Military, Life as a Pioneer Woman, Indigenous Artefacts, and so much more...



**BUS & LARGE GROUPS WELCOME
CATERING AVAILABLE
OR BYO LUNCH ON PICNIC TABLES**

For full details and enquiries

millmerranmuseum.com.au

Proudly maintained by the Millmerran & District Historical Society Inc.

RAFF

GROUP

Clifton

47 King Street

Ph: 07 4697 3155

Millmerran

97-99 Campbell Street

Ph: 07 4695 2939

Pittsworth

116 Yandilla Street

Ph: 07 4693 2651



admin@raffgroup.com.au

**Want to see more money invested
into the Millmerran community?**

Switch your banking to a Heritage
Community Branch today!

When you bank with our Millmerran Community Branch, profits are put back into the local community to support charities, sporting clubs and community organisations.

Help your community prosper by talking to us today.

Visit us at

35 Campbell Street, Millmerran
07 4695 2200

Talk to us today.
heritage.com.au

 **Heritage**
Community Branch
Millmerran

Heritage Bank Limited ABN 32 087 652 024, AFSL and Australian Credit Licence 240984.

FOODWORKS MILLMERRAN

4 Alfred Street | Ph (07) 4695 1444

TRADING HOURS

Monday - Friday • 7.00am to 7.00pm
Saturday - Sunday • 7.00am to 5.30pm



**Free Home Delivery
on Orders Over \$40**

**Produce
Meat
Deli
Grocery
General
Merchandise**

FOODWORKS
Works for me!



Knights
Electrical Services (QLD)



Electrical



Aircon



Solar

www.knightslectrical.com.au

07 4695 1304

Rams Head Hotel



**Drive-In Bottleshop
Accommodation
Meals & Cold Beer
TAB • Pokies • Keno**

Located in the
main street of Millmerran

1 Campbell Street • PH 07 4695 1488


*Join us for breakfast, lunch
or just to enjoy the best coffee
with delicious homemade cake*



OPEN Mon to Fri • 6.30am - 2.00pm
Sat • 8.00am - 1.00pm

CHECK OUT OUR SOCIAL MEDIA

@foragekitchenandcoffee

 forage kitchen and coffee bar

**55-57 Campbell Street, Millmerran
PH 0421 712 163**



**MILLMERRAN
RURAL**

ABN 67 322 362 554

LIVESTOCK • REAL ESTATE • CLOTHING • RURAL SUPPLIES

71 Campbell St, Millmerran | PO Box 146, Millmerran Q 4357 | 07 4695 1355 | www.millmerranrural.com.au



Visit our online store www.millmerranruralclothing.com



Millmerran Bakery and Café

OPENING HOURS

Mon - Fri • 5am to 5pm
Weekends • 5am to 2pm

75 Campbell Street • PH 07 4695 1589

 www.facebook.com/millmerranbakery

Like Us On 

(07) 4695 1459

hairexpression@bigpond.com



23 Campbell St
Millmerran

Mon-Fri: 08:30 - 5:00

Sat: 08:00 - 12:00

After hours by appointment only.

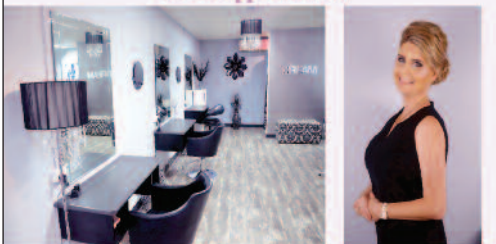
HAIR EXPRESSIONS

UNISEX HAIR SALON

SPECIALISTS IN ALL HAIR CARE!

Style cutting, colouring, perming to weddings,
formals and more.

Visit Natasha and her professional team
for an appointment!



Millmerran Village Caravan Park



 Find us on
facebook.

A PICTURESQUE PARK SET IN PEACEFUL AND WELL-TREED, LANDSCAPED SURROUNDS

Set on 13 acres, this beautiful lakeside park offers extensive
and varied forms of accommodation including

**Deluxe Cabins, Family Cabins, Motel Rooms and
70 spacious Powered Van Sites**

Large Laundry, Dump Point, Amenities,
a fantastic Camp Kitchen with Gas BBQ and Firepit

Adjacent to tavern, close to shops and we're pet friendly!

Stay a while - you'll be glad you did

Brian and Stephanie Watts

Millmerran Village Caravan Park
59-81 Bruce Road Millmerran Qld 4357

Phone: 07 4695 2020

Email: mvcaravanpark@bigpond.com

Website: www.millmerranvillage.com.au



Every farm has a story.
Welcome to ours...



MILLMERRAN PHARMACY

43 CAMPBELL STREET, MILLMERRAN
PHONE 4695 1458

- ✓ Medication Management Advice
- ✓ Home Medication Reviews
- ✓ NDSS Sub Agent
- ✓ Digital Photo Processing
- ✓ Independent Living Aids
- ✓ Natio Cosmetic Products
- ✓ Gifts for all occasions
- ✓ And much more!



Call in and talk
to one of our
friendly staff

TRADING HOURS

Monday to Friday 8:30am-5:00pm
Saturday 8:30am-12:00pm

Loo La Belles

ABN 98 165 749 852

Like us on !

Phone/Fax (07) 4695 1555

23 Campbell Street, Millmerran 4357

email: hairexpression@bigpond.com

Dianne, Natasha

- Giftware

- Jewellery

- Handbags

- Shoes

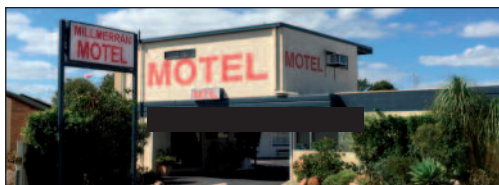
- Children's Wear

- Baby Gifts

- Ladies' Clothing

- Candles

and much more!



MILLMERRAN MOTEL

There are 11 units available, allowing Millmerran Motel to easily cater for singles, couples and families

The team is committed to ensuring that all rooms and facilities are comfortable, clean and offer everything you need to enjoy your stay including FREE WIFI

Conveniently located next to BP Service Station in the heart of town

62 Campbell St, Millmerran Qld

Phone 07 4695 1155

E: millmerran.motel@bigpond.com

www.millmerranmotel.com.au

BP Millmerran

64-72 Campbell Street • (07) 4695 1584



FUEL, SOUVENIRS & FRESHLY MADE FOOD

by our friendly staff

**Sandwiches, Burgers,
Fish & Chips, Coffee & Cakes**

TAKEAWAY OR DINE IN 7 DAYS A WEEK

TRADING HOURS

**Monday-Friday 6:00am-8:00pm
Saturday & Sunday 6:30am-8:00pm**

more
than
money



LOCAL PEOPLE. EXPERT ADVICE.

Proudly supporting Millmerran
for over 100 years. Come meet
our team of expert bankers.
We're ready to help.

Narelle Fraser
Branch Manager
4695 3000

Jade Van Schellen
Customer Advisor
4695 3000

© 2019 National Australia Bank Limited ABN 12 004 044 937 AFSL and Australian Credit Licence 230686

BLAND

• SAND • GRAVEL •
• QUARRIES •

PITTSWORTH YARD

Phone 0428 951 324

DOWN'S SAND & GRAVEL – LANDSCAPE SUPPLIES

Phone 0408 659 733

PITTSWORTH-BROOKVIEW QUARRY SCRUBBY MOUNTAIN ROAD

Phone Adam 0428 951 337

MILLMERRAN

LOT 5 BLIGH STREET

Phone (07) 4695 1332

DULACCA QUARRY

ALFORDS ROAD

Phone (07) 4695 1332

LOCALLY FAMILY OWNED AND OPERATED COMPANY WITH OVER 30 YEARS OF KNOWLEDGE AND EXPERIENCE

Specialising In

Quarrying, Logistics & Earthmoving

Supplying construction and quarry
materials to the public and government
bodies throughout the Toowoomba,
Maranoa and Western Downs Regional
Council areas including the Surat Basin

MOBILE CRUSHING & SCREENING PLANT AVAILABLE FOR HIRE SERVICING ALL AREAS

Visit our website

www.blandsandandgravel.com.au

MITRE 10 MILLMERRAN

We Have all your Tradesman & DIY Needs Covered!

See us for:

Plumbing

Steel & Timber

Wall Sheeting

Kitchens

Paint and Tinting

Key Cutting

Garden Supplies

BBQ, Outdoor Living

Kitchen Ware

Gifts, Layby and Gift Cards

CAN'T DECIDE?
GRAB A GIFT CARD



Instore and online
visit mitre10.com.au
for details

61 Campbell St,

Millmerran QLD 4357

Phone: 07 4695 1636

Open Mon - Fri 8am - 5pm

Sat 8.30am - 11.30am

MIGHTY HELPFUL
MITRE 10

#MITRE10

The **MILL INN TAVERN**

33 McKenzie Street, Millmerran • 4695 1199



Millmerran's Favourite Eating Destination

- LUNCH & DINNER 7 DAYS
- 4 COMFORTABLE MOTEL ROOMS
- GROUP BOOKINGS & WEDDINGS
- COUNTRY HOSPITALITY
- BOTTLEMART BOTTLESHOP IN CAMPBELL ST NEXT TO BP GARAGE
- 9 GAMING MACHINES

**Millmerran
Officesmart
and News**



Ivan and Maria
extend a warm
welcome to
Millmerran. We
love visitors.
Please call in!

17/19 Campbell St
Millmerran QLD 4357

Ph: 07 4695 1339

Email: millmerran.news@bigpond.com

DANGLELOW SPICES

69 CAMPBELL STREET

PH 0419 776 942

OPEN: THURSDAY & FRIDAY
10AM TO 1.30PM

Spices, teas, windchimes and more

ON SALE newly released book
Peacock White by Linda Lorraine



Early Childhood Education & Care

'where a lifetime of learning begins'

Little Tackers provides dedicated early childhood care and education in a rich learning environment. Catering for children from 6 weeks to 5 years of age and before and after school care for primary age children. A Queensland Government Approved Kindy Program is run by a fully qualified teacher. A wonderful play based educational program introduces children to a lifetime joy of learning and ensures your child's readiness and easy transition on to school.

PH 07 4695 2999

millmerran@littletackerschildcare.com.au
www.facebook.com/littletackersmillmerran

YONDALE DESIGNS

{hand stamped sentiment}



Hand Stamped Jewellery & Giftware
Personal Shoppers Welcome by Appointment

35 Harris Road, Pampas. 0407 623 746

www.yondale.com.au

MILLMERRAN SHOW SOCIETY INC

Fun show for all ages

Annual Show end Feb/early March

Weekend show Saturday & Sunday

Camping available all year

Campdraft early September

Hire of grounds available

- Horse Events
- Woodchop • Poultry
- Pavilion • Fireworks
- Prime & Stud Cattle
- Sheep Dog Trials
- LIVE Music
- Rough Stock Rodeo



**Millmerran
Show
Rodeo**

Follow us
@ Millmerran
Show Society



**Home of the World Bullock
Riding Championship**

Visit www.millmerranshowociety.com for more information on the show, events & camping

Places of Worship - Millmerran

St Frances De Sales Catholic Church • Walpole Street

St Peter's Anglican Church • Walpole Street

St Andrew's Presbyterian Church • Mary Street

Uniting Church • Florence Street

Seventh Day Adventist Church • Campbell Street

Church 4357 • Sports Centre, Commens Street (www.facebook.com/church4350)

Millmerran Bible Baptist Church • Cultural Centre, Walpole Street - 10am Sunday

CWCI Australia KYB • 07 4695 1214

Lutheran Church • 07 4693 1512

Jehovah Witness Assembly Hall • Mary Street

Jesus is Lord Fellowship • Cypress Gardens - 0428 317 559

Wind from Elsewhere • Millmerran Downs - 0427 574 497

Historic Millmerran District Churches

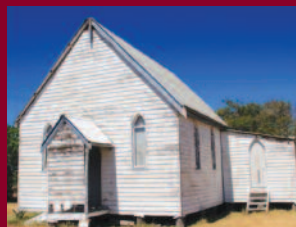
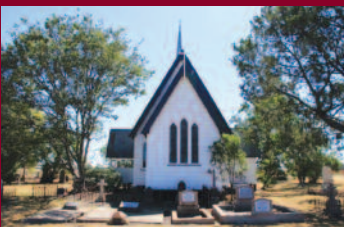
Former St Alban's Anglican Church

Church of All Saints Yandilla

Former St Paul's Tummalville



Kooroongarra



NOT FOR PUBLIC ENTRY

NOT FOR PUBLIC ENTRY

Australian Camp Oven Festival

Held every 2 years, the Australian Camp Oven Festival takes place in Millmerran, Queensland. The Festival celebrates Australian heritage and outback culture, offering visitors a range of unique food and heritage experiences including camp oven cooking, bush poetry, damper making, billy boiling and heritage demonstrations. The Australian Camp Oven Festival allows visitors to fully immerse themselves in Aussie culture and country life. Unhitch the caravan and live like a local for days, enjoying country music, discovering Aussie traditions of old and new, developing your camp oven cooking skills and having a darn good time in the process!

GET IN TOUCH

Web: acof.com.au • Email: info@acof.com.au • Phone: 0429 727 503



Glossy Black Cockatoo - David Cook

Birds Around Millmerran

The Millmerran district is rich in bird life, from the rare Glossy Black Cockatoos in our Hairy Oaks to the grassy woodland species in Wondul National Park, such as the tiny Variegated Fairy Wren



Variegated Fairy Wren - Laurie Boyle

Bird watchers will also be rewarded with sightings of many species unknown closer to the coast. A complete bird list and map of bird watching areas is available from the Visitor Information Centre, corner of Mary and Edward Streets, Millmerran (location 23 on the town map)

Annual Events

Millmerran Show (**Feb/Mar**)

Hot Rods Easter Weekend

and Anzac Day March/Service (**Apr**)

Yallambee Mothers Day Fundraiser (**May**)

Chisholm Trail (**Sep/Oct**)

Millmerran Christmas in the Bush (**Nov/Dec**)

Biennial Events

Australia Day Celebrations

(**Jan - even years**)

Rendezvous (**Jul - odd years**)

Australia Camp Oven Festival
(**Oct first weekend - even years**)

Busking Comp (**during Camp Oven Festival**)

FOR REGULAR UPDATES ON EVENTS: www.millmerran.net.au • Facebook www.facebook.com/millmerrancommerce

Millmerran & Districts has a population of 3,411 persons over an area of 471,571 hectares or 4,716 km square. The climate in Summer ranges from 21C to 38C, Winter range 4C to 20C. Average rainfall annually is 638mm. Millmerran township is supplied by treated and reticulated town water



MILLMERRAN IS LOCATED

82km Toowoomba CBD
213km Brisbane CBD • 112km Warwick
90km Dalby • 47km Cecil Plains
140km Goondiwindi



MILLMERRAN VISITORS GUIDE *proudly produced by*

Millmerran Commerce & Progress Inc.

PO Box 215, Millmerran Q 4357

Email: millmerrancommerce@live.com.au

Website: www.millmerrancommerce.com

Facebook: www.facebook.com/millmerrancommerce

Events & Tourism Website: www.millmerran.net.au

The production of this booklet has been funded through the generous support of our advertisers, please give them your support when you visit us

Disclaimer: MCPI has taken all care to produce this booklet/maps and directions as accurately as possible, but will not be held responsible for any errors or omissions. Please take care while walking, cycling and driving in Millmerran and Districts and look out for pedestrians, other road users and wildlife and abide by all road rules, taking care to drive to all weather/road conditions. Old-Millmerran Post Office, Koorongarra Hall, St Alban's Anglican Church – Koorongarra and St Paul's Tummaville have been included for historic purposes only and are not for public entry.